



[www.zoom-room.com](http://www.zoom-room.com)

# ZOOM-ROOM™ SHOP DRAWINGS©

## QUEEN-SIZE I.R. MECHANISM

ZOOM-ROOM  
2121 NORTH BAYSHORE DRIVE #912  
MIAMI, FL 33137

TEL: 888.211.1120  
TEL: 305.677.9148  
FAX: 305.677.9278

[PETERMEDVIN@ZOOM-ROOM.COM](mailto:PETERMEDVIN@ZOOM-ROOM.COM)



**ATTENTION DESIGNERS AND MILLWORKERS:  
READ THIS BEFORE DESIGNING OR BUILDING A ZOOM-ROOM CABINET  
TO ENSURE SUCCESSFUL INSTALLATION OF THE BED MECHANISM.**

Please discuss with a Zoom-Room employee before changing any dimensions. You must follow the interior dimensions as shown in the Shop Drawings to accommodate the bed system.

The cabinet must be built so the interior dimension between the side support panels is 61-7/8". (See FRONT ELEVATION, Sheet 1 of 7).

Construct Bolsters in the shape of the rail guides on each side to establish the correct interior distance needed for the motors and bed mechanism to fit (58-7/8"). Bolstering the rail guides gives the mattress ample space to travel in and out of the cabinetry so they do not damage the mattress cover as it travels up and down the rail guides (see VERTICAL SECTION Sheet 2 of 7 for positioning of the Bolsters). The Bolster's edge should be sanded and finished, and the lower bolsters should have the same finish as your cabinet, since once the bed is open they will be visible.

The Drop Block should be placed anterior to the top of the Bolsters and rail guides, just below the rail

The middle recessed area of the cabinet (space for a TV or bookshelves) should begin at least 35" from the floor, and be no greater than 9" deep (not including the 3/4" front Headboard). This allows enough interior cavity space behind the TV Panel so that the mattress may travel without interference. (See VERTICAL SECTION, Sheet 2 of 7).

The Footboard should be a solid piece of plywood or MDF (23-1/2" H for solid floors, and 23" H for carpet), or a solid piece of plywood or MDF with light paneling attached to the front (for decoration). The Footboard requires attaching a Reinforcement Beam to eliminate warping, as the mattress applies pressure to the Footboard. Weight limit is 33lbs.

Any electrical wires or cables should be secured to the interior of the cabinet and covered to prevent snags on the mattress and mechanism. Wiring and cables should be channeled out through the side panels or through the Bolsters so as not to impede the travel of the bed and mechanism. Please see our document "Wiring for AV Equipment".

The IR receiver must be accessible for remote operation and power outage backup. As the chord is only 5' long, options may be limited. Generally the chord is either channeled through the back of a side column, to the side of the center cabinet or inside a side cabinet. If necessary, use an IR extender or consult with Zoom-Room regarding placement.

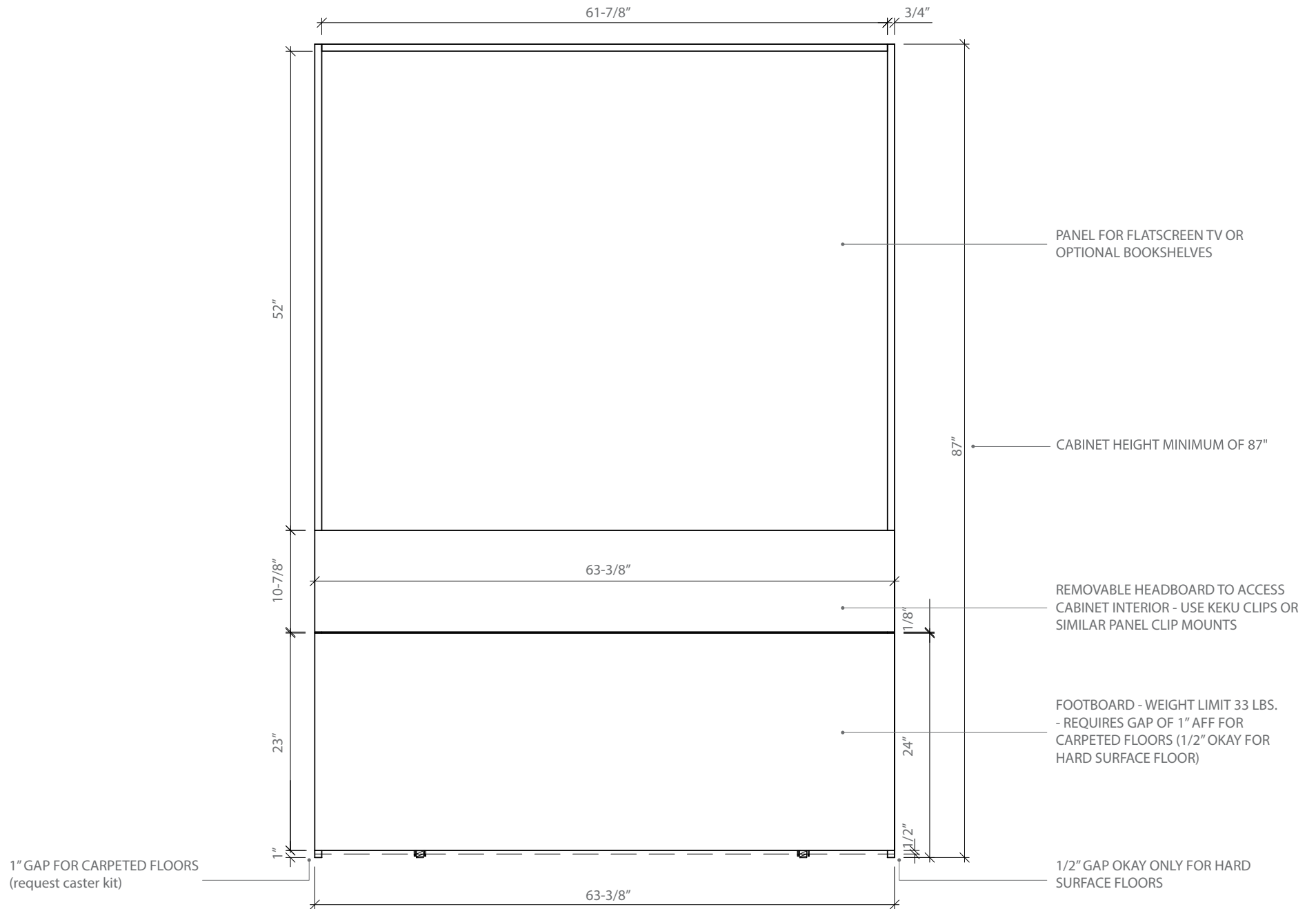
Always allow for an accessible interior by constructing a removable Headboard. This is especially important if you decide to mount your cabinet to the wall (normally the unit is freestanding and does not need to be bolted to the wall or floor).

The Strap Support Beam (see REAR ELEVATION Sheet 3 of 7) must be made of wood, not MDF.

If your Zoom-Room will be installed on carpet, additional casters may be applied (See Shop Drawings).

**\* Please send your Zoom-Room designs or drawings to [petermedvin@zoom-room.com](mailto:petermedvin@zoom-room.com) or fax them to (305) 677-9278 for review before constructing your cabinet.**

Call **(888) 211-1120** with any questions.



**FRONT ELEVATION**  
**ZOOM-ROOM™ QUEEN SIZE - I.R. MECHANISM**

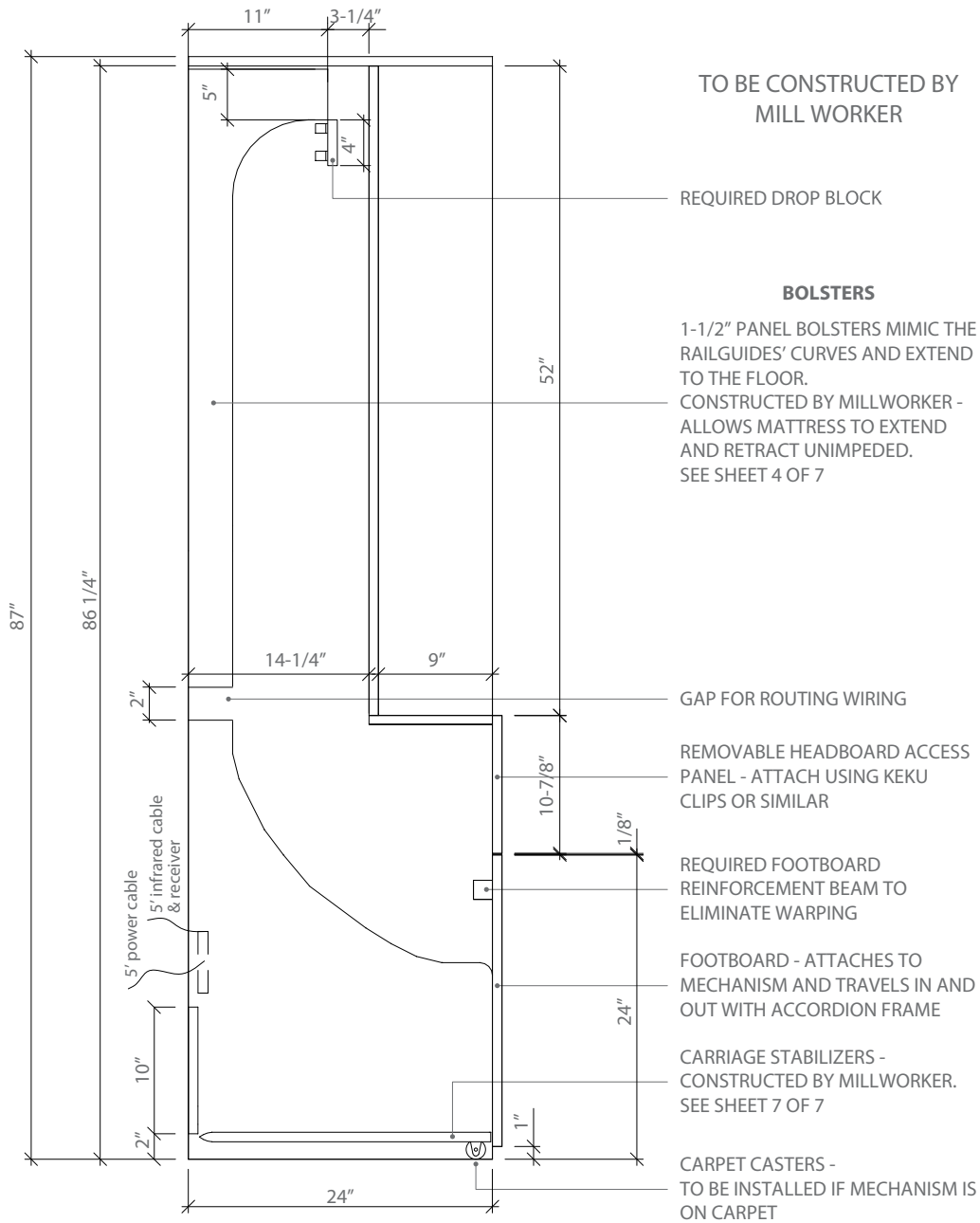
ZOOM-ROOM™

ZOOM-ROOM™  
 2121 N. BAYSHORE DR. #912  
 MIAMI, FL - 33137 305.677.9148

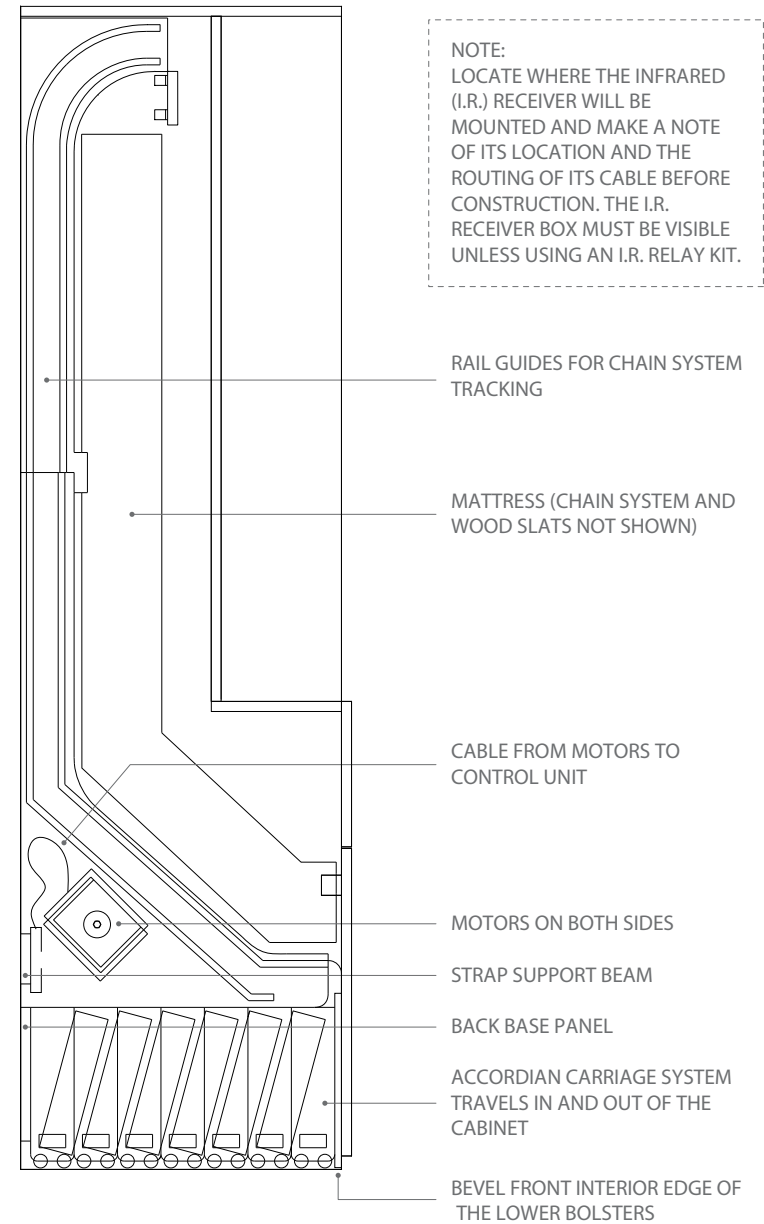
DATE: JULY 2013

SCALE: NTS

SHEET 1 OF 7



CABINET SECTION



CABINET SECTION WITH ZOOM-ROOM MECHANISM

**CABINET SECTIONS**  
**ZOOM-ROOM™ QUEEN SIZE - I.R. MECHANISM**

ZOOM-ROOM™

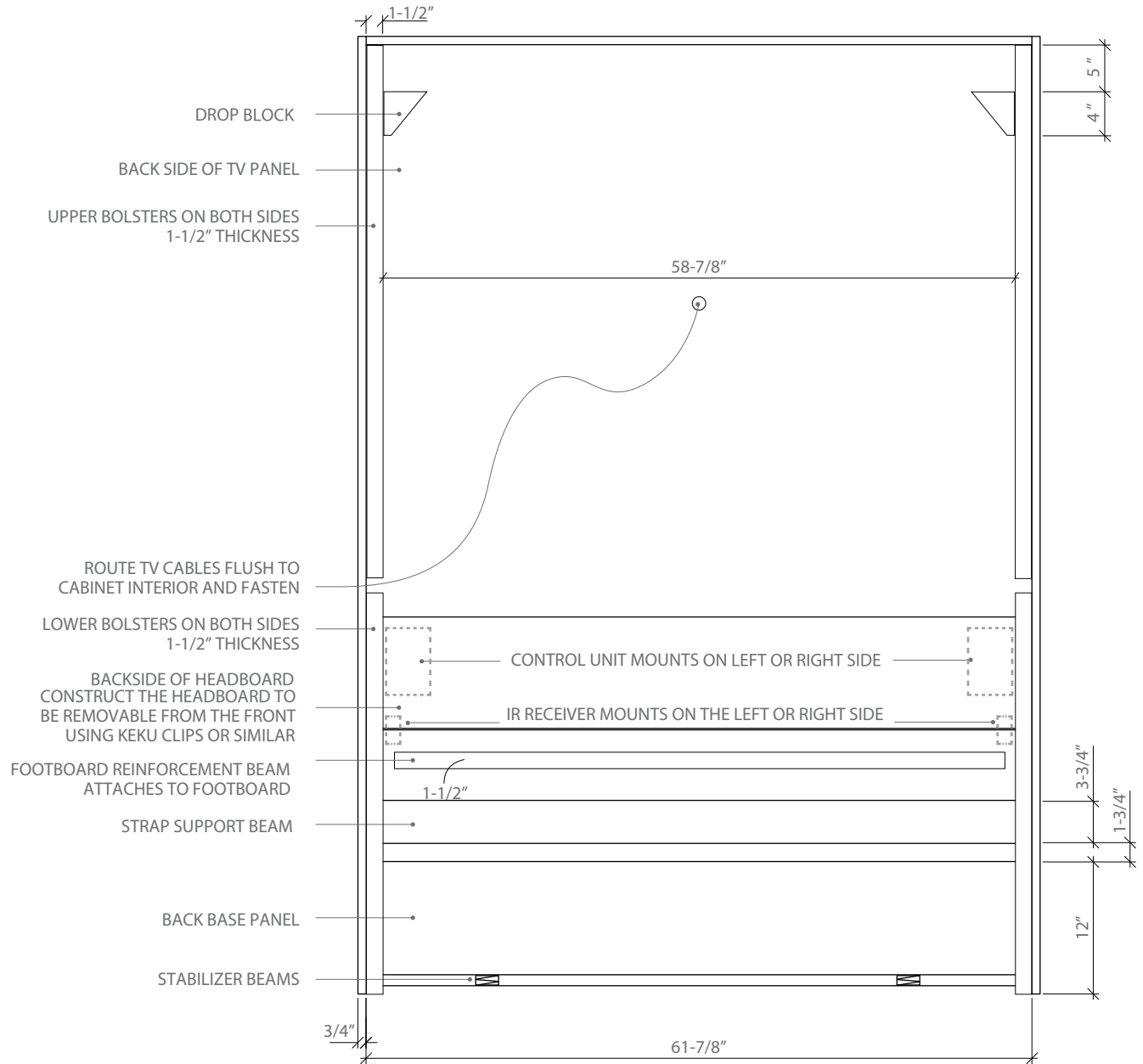
ZOOM-ROOM™  
2121 N. BAYSHORE DR. #912  
MIAMI, FL - 33137 305.677.9148

DATE: JULY 2013

SCALE: NTS

SHEET 2 OF 7

NOTE:  
 ONLY THE STRAP SUPPORT BEAM AND THE BASE PANEL CAN BE ALIGNED WITH THE BACK OF THE RAIL GUIDES, I.E. PLACED WITHIN THE INTERIOR OF THE BOLSTERS. ANY OTHER BACK SUPPORT MUST BE ATTACHED TO THE EXTERIOR OF THE CABINET. AS A GENERAL RULE, THE BACK SHOULD NOT BE CLOSED



NOTE:  
 THE CASTERS AND UNDER CARRIAGE STABILIZER BEAMS ARE MOUNTED INSIDE THE CABINET NEXT TO AND PERPENDICULAR TO THE FOOTBOARD - SEE SHEET 6 OF 7

**REAR ELEVATION**  
**ZOOM-ROOM™ QUEEN SIZE - I.R. MECHANISM**

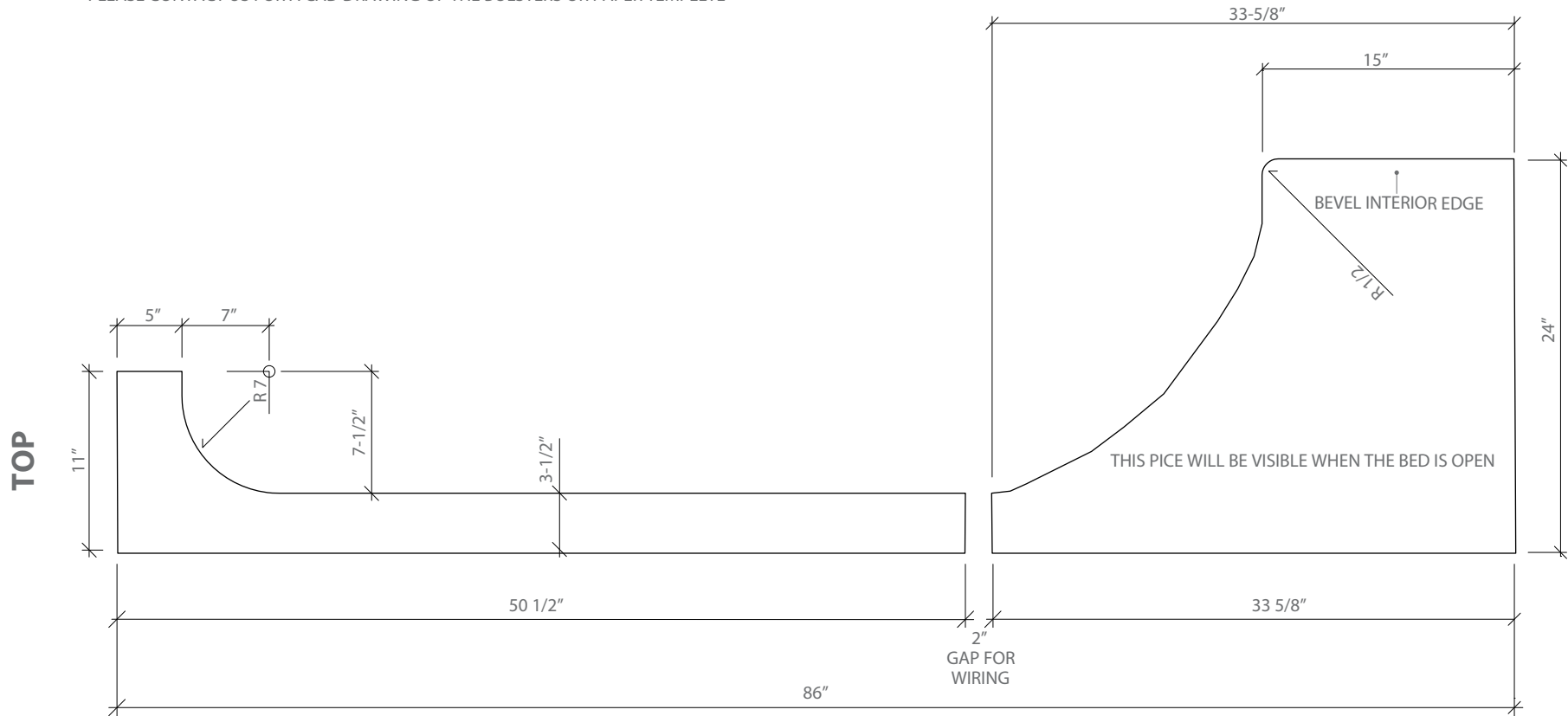
ZOOM-ROOM™	ZOOM-ROOM™ 2121 N. BAYSHORE DR. #912 MIAMI, FL - 33137 305.677.9148	
DATE: JULY 2013	SCALE: NTS	SHEET 3 OF 7

**BOLSTER TEMPLATE FOR RAIL GUIDES -**

CONSTRUCTED BY MILL WORKER  
 INSTALLED BY CABINET INSTALLER

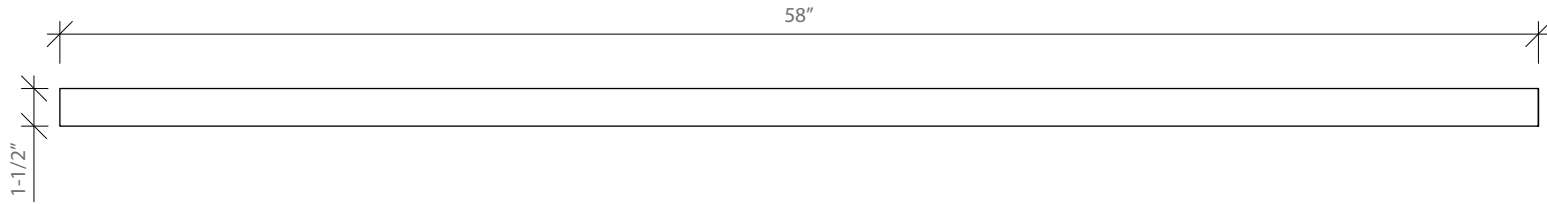
**NOTE:**

BOTH TOP AND BOTTOM THICKNESS AT 1-1/2"  
 BEVEL THE INTERIOR INSIDE EDGE OF THE LOWER BOLSTERS  
 FINISH LOWER BOLSTERS TO MATCH CABINET FINISH (LOWER BOLSTERS WILL BE VISIBLE)  
 PLEASE CONTACT US FOR A CAD DRAWING OF THE BOLSTERS OR PAPER TEMPLETE



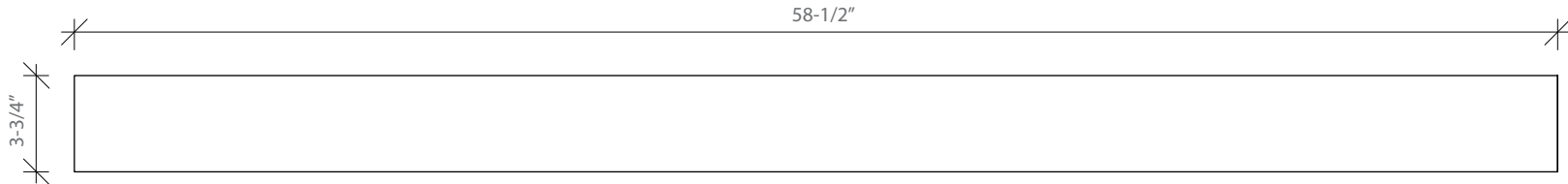
**FOOTBOARD REINFORCEMENT BEAM 1 1/2" THICK**

MOUNT ON INTERIOR OF FOOTBOARD 2" BELOW THE TOP AND CENTERED. CONSTRUCTED AND INSTALLED BY MILLWORKER. SUPPLY COUNTERSINK CAPS.



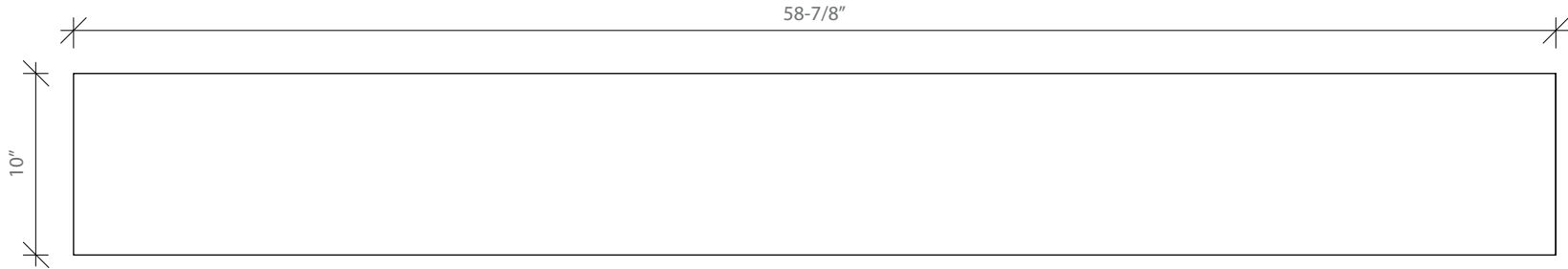
**STRAP SUPPORT PANEL (WOOD ONLY)**

INSTALLED DURING ZOOM-ROOM INSTALLATION. CONSTRUCTED BY MILLWORKER.



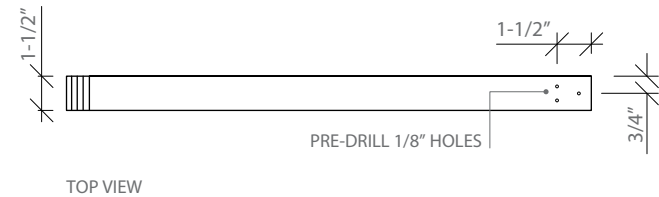
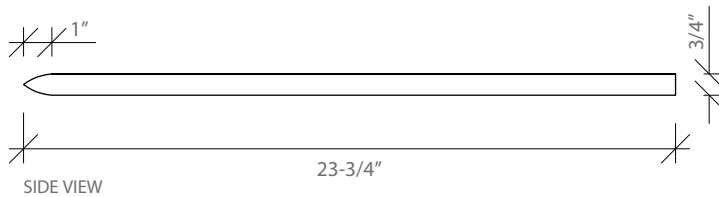
**BACK BASE PANEL**

INSTALLED DURING ZOOM-ROOM INSTALLATION. CONSTRUCTED BY MILLWORKER.



**CARRIAGE STABILIZERS**

INSTALLED DURING ZOOM-ROOM INSTALLATION. CONSTRUCTED BY MILLWORKER. MOUNTED UNDER CARRIAGE SYSTEM. FOR CARPET INSTALLATIONS ONLY



**ADDITIONAL PARTS**  
**ZOOM-ROOM™ QUEEN SIZE - I.R. MECHANISM**

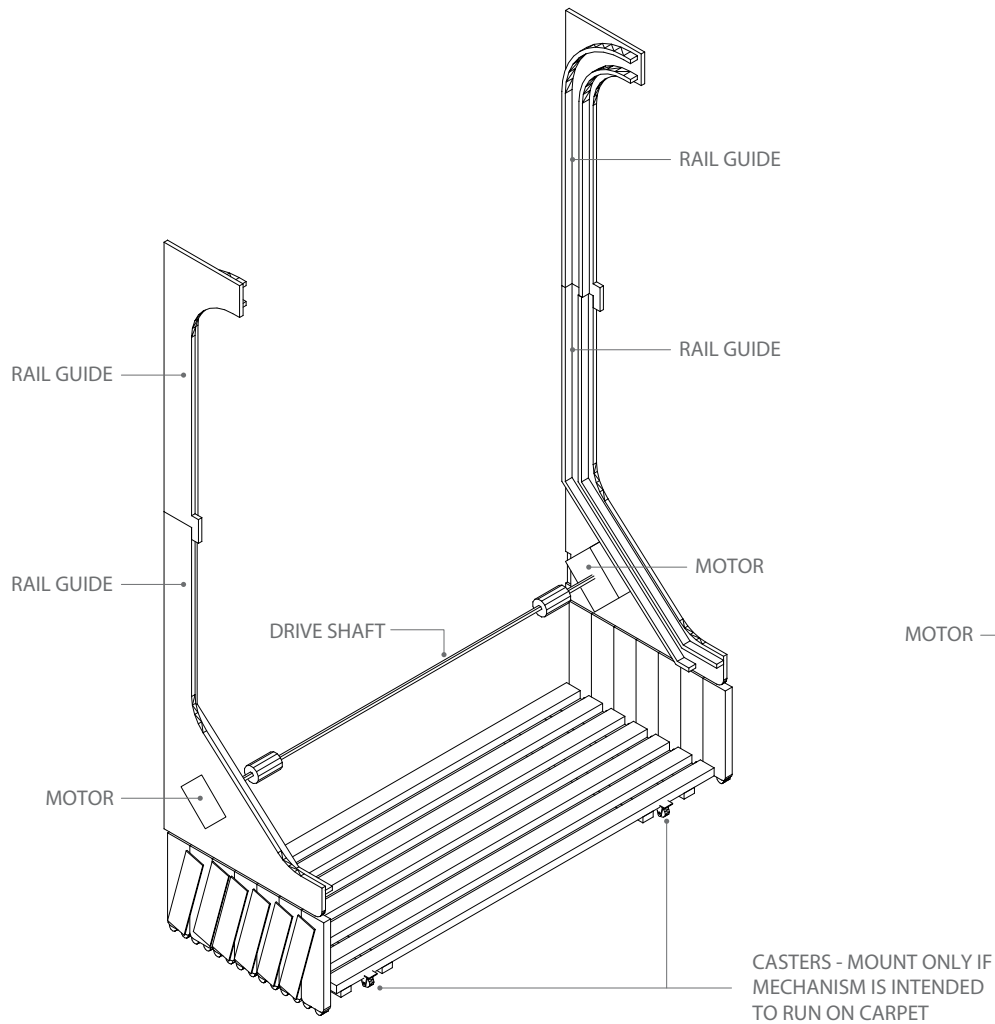
ZOOM-ROOM™

ZOOM-ROOM™  
 2121 N. BAYSHORE DR. #912  
 MIAMI, FL - 33137 305.677.9148

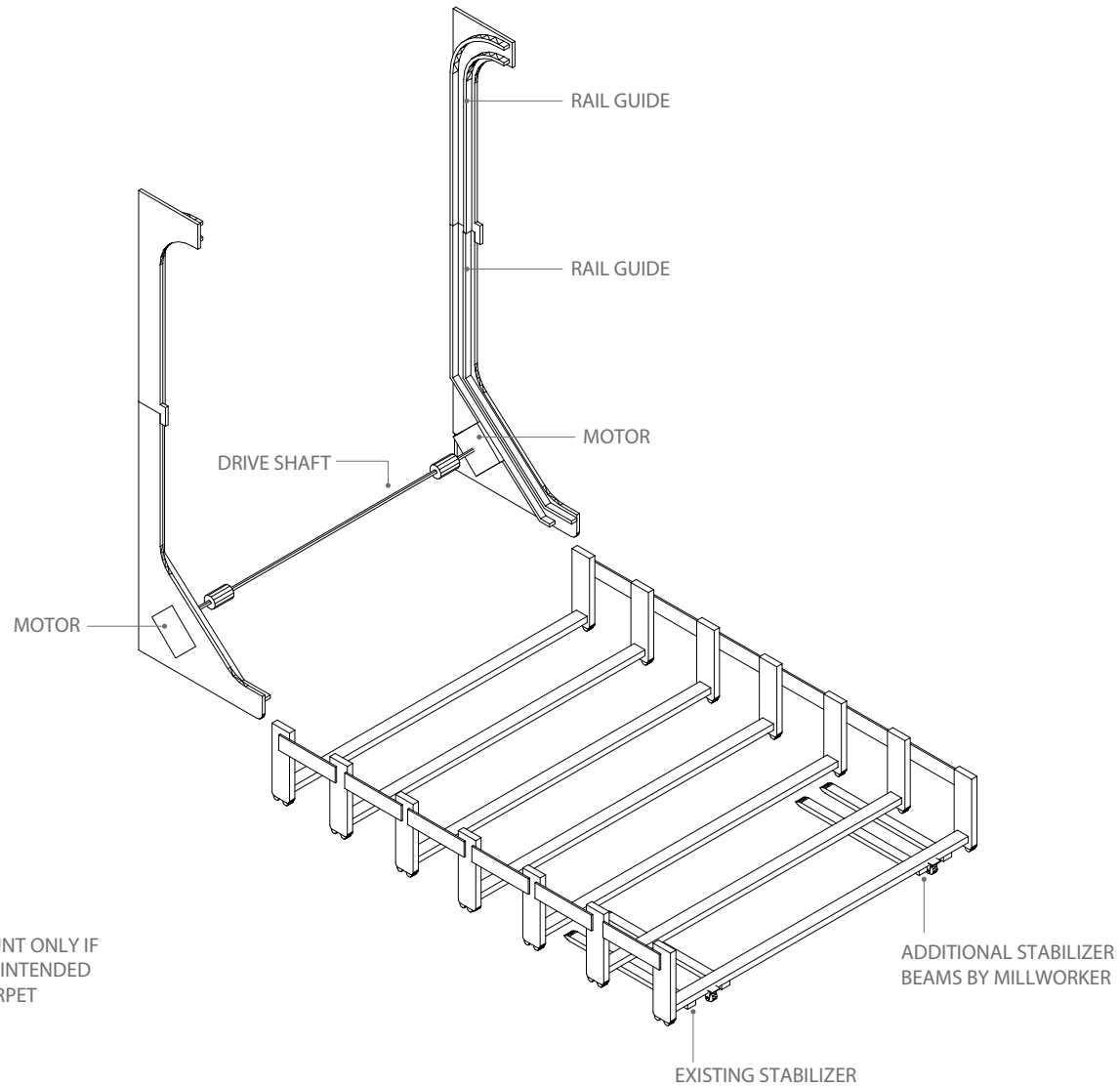
DATE: JULY 2013

SCALE: NTS

SHEET 5 OF 7



**ACCORDION CARRIAGE SYSTEM (RETRACTED)**



**ACCORDION CARRIAGE SYSTEM (EXTENDED)**

DIAGRAM DOES NOT SHOW MATTRESS, INFRARED RECEIVER, CHAIN SYSTEM, CONTROL UNIT, SLATS OR SLAT RINGS - WHICH ARE INCLUDED IN THE BED SYSTEM.

**MECHANISM DIAGRAM  
ZOOM-ROOM™ QUEEN SIZE - I.R. MECHANISM**

ZOOM-ROOM™

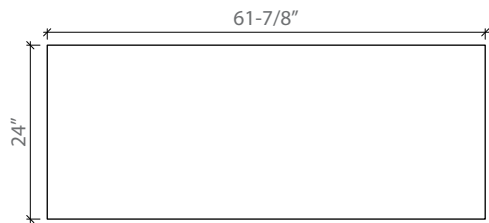
DATE: JULY 2013

ZOOM-ROOM™  
2121 N. BAYSHORE DR. #912  
MIAMI, FL - 33137 305.677.9148

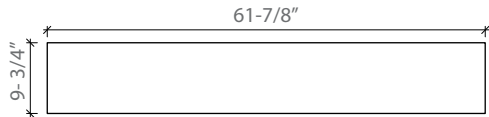
SCALE: NTS

SHEET 6 OF 7

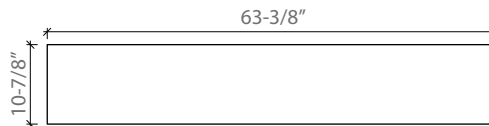




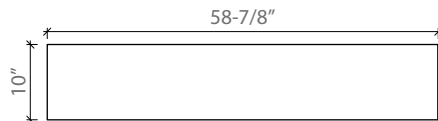
TOP PANEL - QTY 1



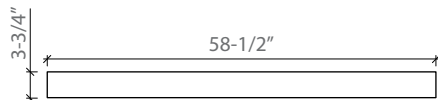
TV SHELF PANEL - QTY 1



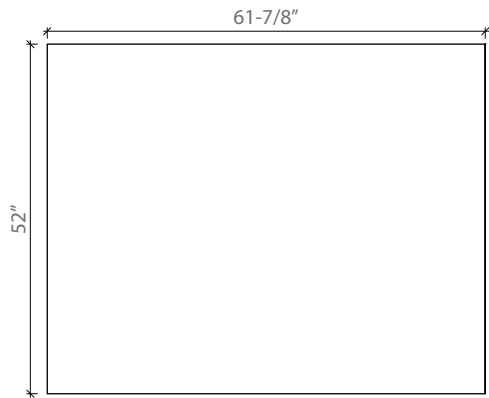
HEADBOARD - QTY 1



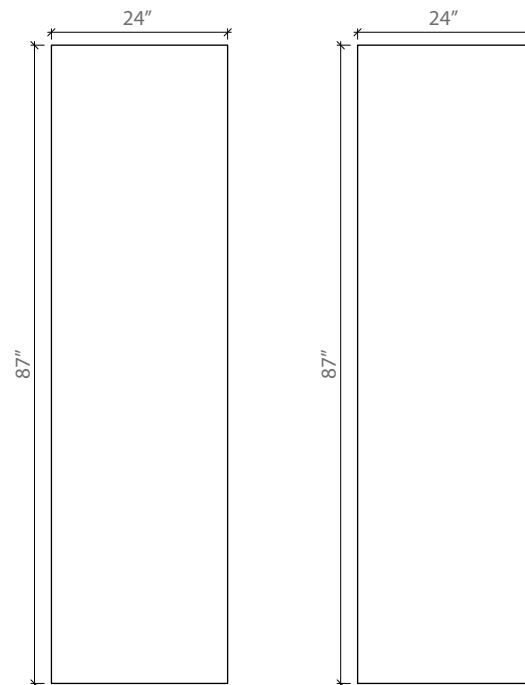
BACK BASE PANEL - QTY 1



STRAP SUPPORT PANEL - QTY 1

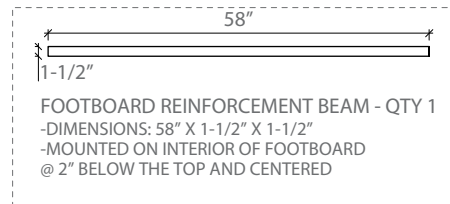


TV PANEL - QTY 1

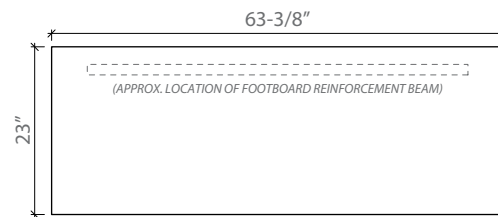


SIDE VERTICAL PANEL - QTY 1

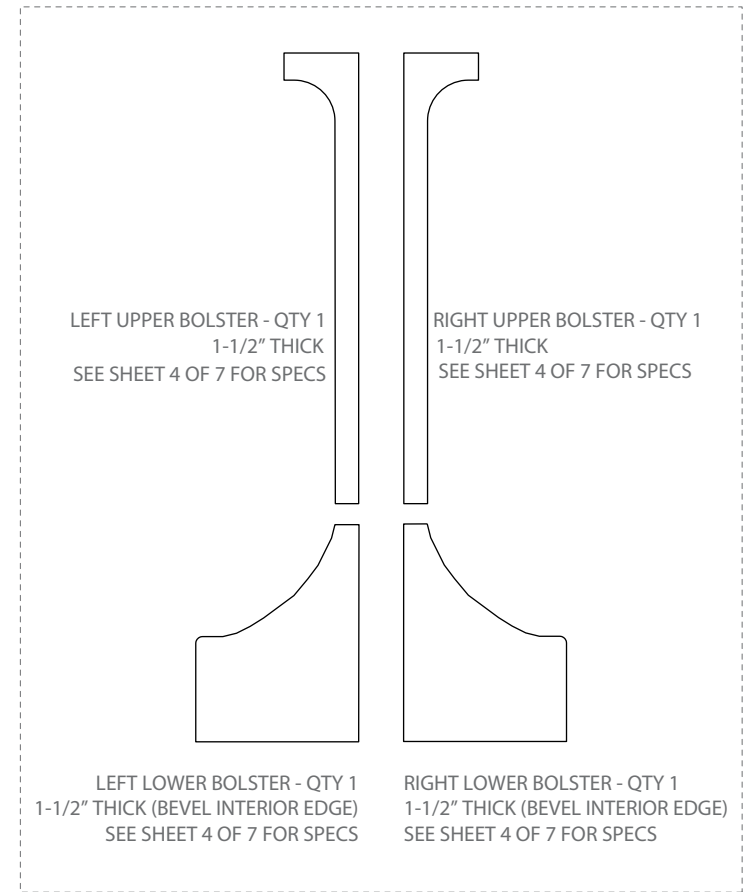
SIDE VERTICAL PANEL - QTY 1



FOOTBOARD REINFORCEMENT BEAM - QTY 1  
 -DIMENSIONS: 58" X 1-1/2" X 1-1/2"  
 -MOUNTED ON INTERIOR OF FOOTBOARD  
 @ 2" BELOW THE TOP AND CENTERED



FOOTBOARD - QTY 1  
 -23" FOR CARPETED FLOORS  
 -23-1/2" ALLOWABLE FOR SOLID FLOORS  
 -TOTAL WEIGHT LIMIT 33 LBS.



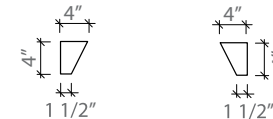
LEFT UPPER BOLSTER - QTY 1  
 1-1/2" THICK  
 SEE SHEET 4 OF 7 FOR SPECS

RIGHT UPPER BOLSTER - QTY 1  
 1-1/2" THICK  
 SEE SHEET 4 OF 7 FOR SPECS

LEFT LOWER BOLSTER - QTY 1  
 1-1/2" THICK (BEVEL INTERIOR EDGE)  
 SEE SHEET 4 OF 7 FOR SPECS

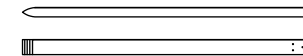
RIGHT LOWER BOLSTER - QTY 1  
 1-1/2" THICK (BEVEL INTERIOR EDGE)  
 SEE SHEET 4 OF 7 FOR SPECS

DROP BLOCK 3/4" THICK - QTY 2



1 1/2"

1 1/2"



CARRIAGE STABILIZERS - QTY 2  
 SEE SHEET 5 OF 7 FOR SPECS  
 FOR OPTIONAL INSTALLATION  
 ON CARPET ONLY

**FINISHED PANEL SIZES (INCLUDING EDGE BANDING)**  
**ZOOM-ROOM™ QUEEN SIZE - I.R. MECHANISM**

ZOOM-ROOM™

ZOOM-ROOM™  
 2121 N. BAYSHORE DR. #912  
 MIAMI, FL - 33137 305.677.9148

DATE: JULY 2013

SCALE: NTS

SHEET 7 OF 7